



# The Quilt 2025 CIS Vendor Presentation

2/27/25

# Agenda

- Introductions
- 400G Network Updates (Future Quilt 400G Port Pricing)
- 5,000 new miles of infrastructure and opportunities
- Q/A, particularly discussion around TZ augments and potential for REN locations to be loaded

# Meeting Attendees

- Jason Taylor - SVP, Public Sector
- Gayle Nelson - VP, Education
- Eric Cho - VP, SLED Sales East
- Darin Craven - EVP, OneTel GEM
- Colin Campbell- Region Director, OneTel GEM

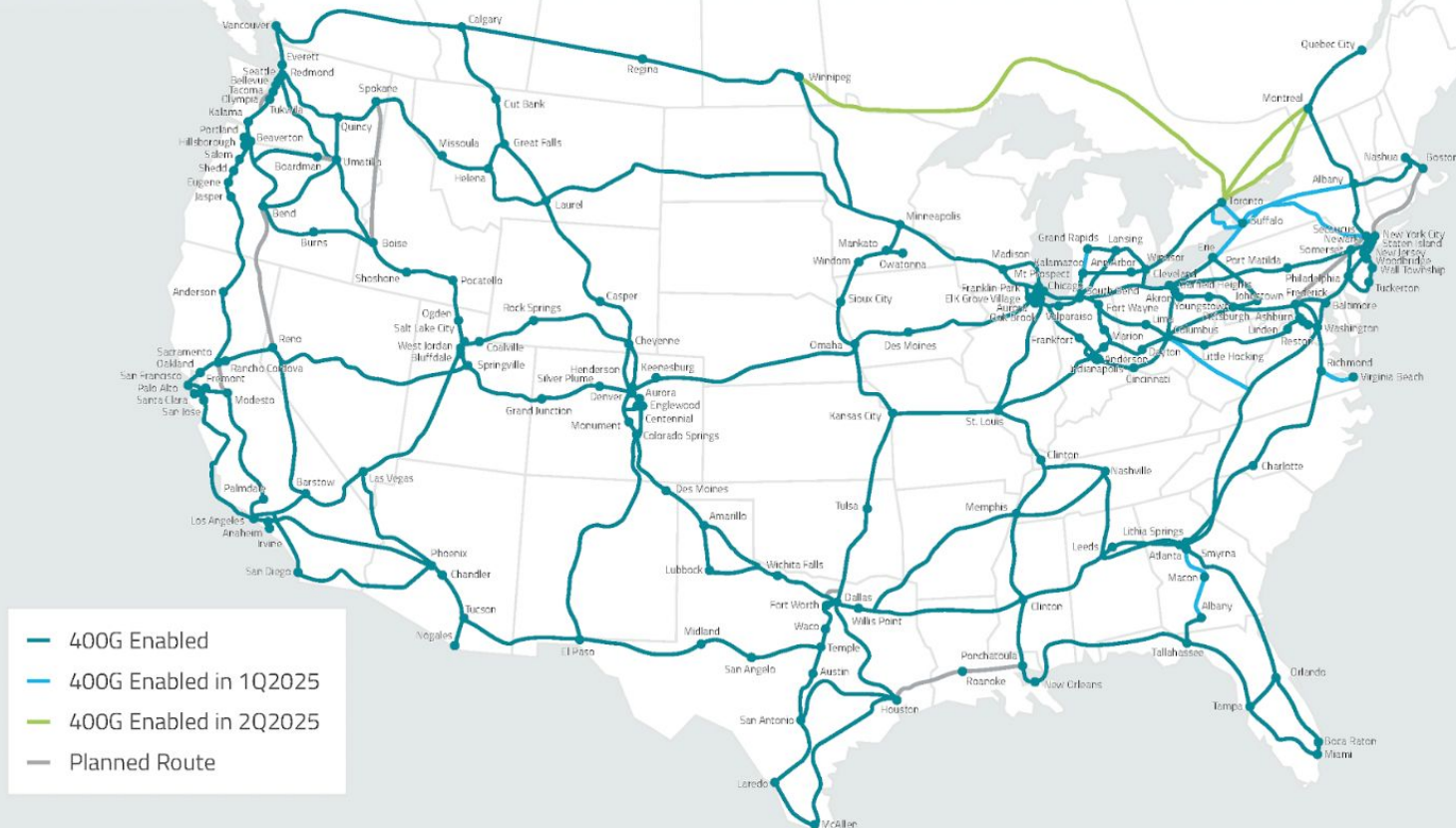


# North America Core Long Haul Wavelength Network





# North America 400G Capabilities



# North America Core Long Haul Dark Fiber Network

- Long Haul Dark Fiber Termination Point
- Long Haul Dark Fiber
- Under Construction Long Haul Dark Fiber

	New Builds	Timing
Existing Long Haul Dark Fiber Routes	Dallas to Denver (overbuild)	Complete
	Las Vegas to Phoenix (overbuild)	Complete
	Omaha to Denver (overbuild)	Complete
	St Louis to Memphis (overbuild)	Complete
	Columbus to Pittsburgh	Complete
	Chicago to St Louis	Complete
	Columbus to Ashburn	Complete
	Chicago to Omaha (overbuild)	Complete
	Umatilla to Reno	Q2 2025
	Wawaka to Columbus (overbuild)	Q2 2025
Under Construction Long Haul Dark Fiber Routes	Las Vegas to Phoenix (overbuild)	Q2 2025
	Atlanta to Dallas (overbuild)	Q3 2025
	Columbus to Ashburn (overbuild)	Q4 2025
	El Paso to Tucson (overbuild)	Q4 2025
	Chicago to Columbus	Q1 2027
	Dallas to El Paso	2028
	Las Vegas to Reno	2028

## Long Haul Dark Fiber Conduit Capacity

Building the next generation of backbone fiber requires understanding:

- **Long term scalability**  
options including conduit and ILA's
- Distinct **overall U.S. ecosystem gaps** where current routes don't exist today OR current route is unable to scale to meet current demand



### Conduit Capacity Availability

- Available
- Augment
- Under Construction
- New Build
- Growth opportunities for future metro investments

# Tranzact Portal - REN / Quilt Data Enhancements

<div> <div>ADDRESS ▾</div> <div>Equinix</div> <div>Q</div> <div>REFINE SEARCH</div> <div>MAP</div> <div>LIST</div> </div>						
We found <b>204</b> results. Please <a href="#">Refine</a> your search terms to narrow your results.						
Select	Building Name	Address	Type	Network Status	Building Entrance	Map
	Equinix AM3 & Equinix AM4	Science Park 610 Amsterdam, 1098XH	Neutral Data Center		Diverse	
	Equinix PA4 / Equinix PABX	110B Avenue du Général Leclerc Pantin, 93500	Neutral Data Center		Diverse	
	Equinix AM1 / AM2	Luttenbergweg 4 Amsterdam, 1101 EC	Neutral Data Center		Diverse	
	Equinix MA5	Equinix MA5, Unit 2 Agecroft Commerce Park, 4 Firedamp Way Swinton, M27 8BX	Neutral Data Center		Diverse	
	Equinix PA2/PA3	114 rue Ambroise Croizat Saint-Denis, 93200	Neutral Data Center		Diverse	
	Equinix PA1	167 Rue de la Belle Etoile Roissy-en-France, 95700	Neutral Data Center		Linear	
	Equinix LD4.2	772 Buckingham Ave Slough, SL1 4NL	Neutral Data Center		Diverse	
	Equinix LD9 (Unit 2)	Unit 2, Volt Avenue London, NW10 6PW	Neutral Data Center			
	Equinix SV10	7 Great Oaks Blvd San Jose, CA 95119	Neutral Data Center		Linear	
	Equinix FR7	Gutleutstrasse, 310 Frankfurt am Main, 60327	Neutral Data Center			
	Equinix NY5	800 Secaucus Rd Secaucus, NJ 07094	Neutral Data Center		Diverse	



# Tranzact Portal - REN / Quilt Data

Enhancements

Quote by Service

Quote by Location

My Quotes

My Orders

Wavelengths



Point to Point

Sites

Bandwidth



Location A



21711 Filigree Ct

21711 Filigree Ct Ashburn, VA 20147

Neutral Data Center Linear

Location Z



Equinix CH1, CH2

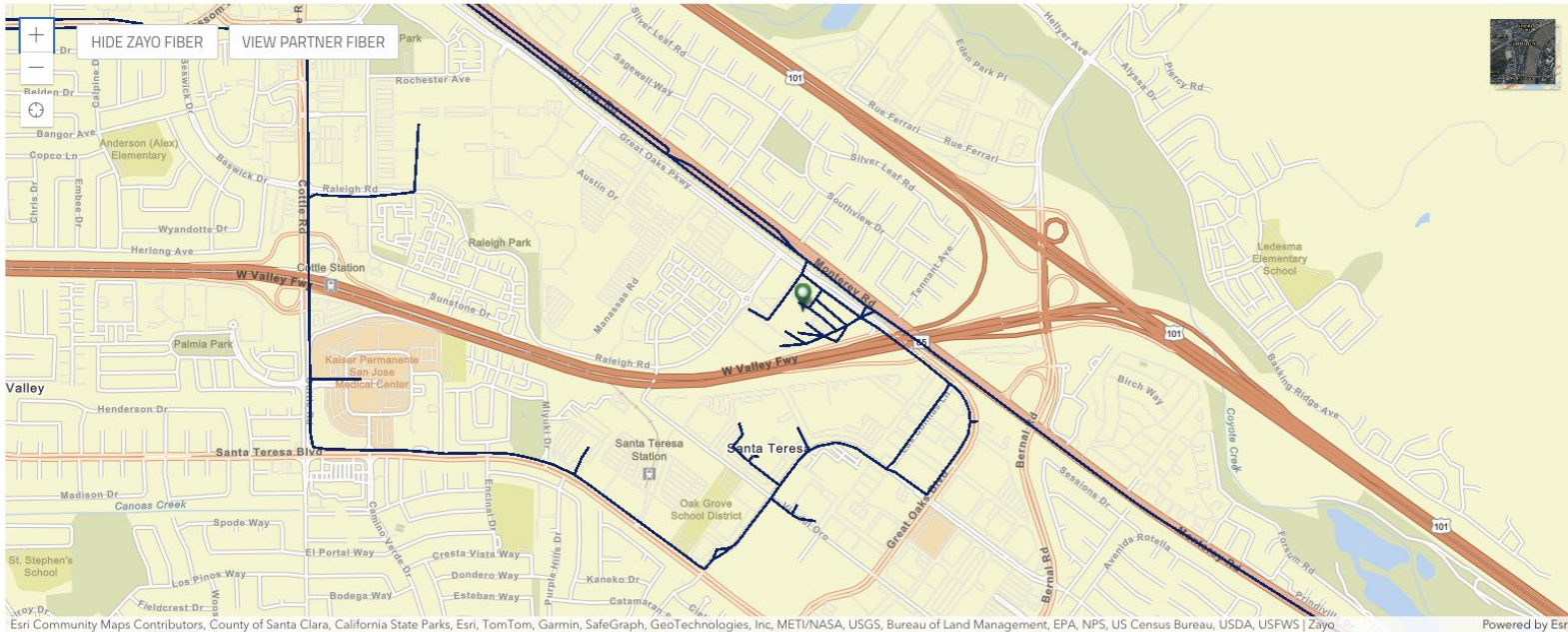
350 E Cermak Rd Chicago, IL 60616

Carrier Hotel Diverse



# Tranzact Portal - REN / Quilt Data Enhancements

Equinix SV1



# Q&A

- What are the factors driving change in REN networks?
- What do you foresee as the evolution in your network architecture?
- What is on your 2025 wishlist?