

# Strategic Scale for Small Institutions



## SUMMARY

The Internet2 community influences, customizes, designs and operates the nation's fastest and highest capacity research and education (R&E) network with; highly sophisticated cloud infrastructure and applications; and comprehensive trust and identity services. This network and services are designed to address the distinctive needs of R&E specifically. That's why Internet2 matters for colleges and universities.

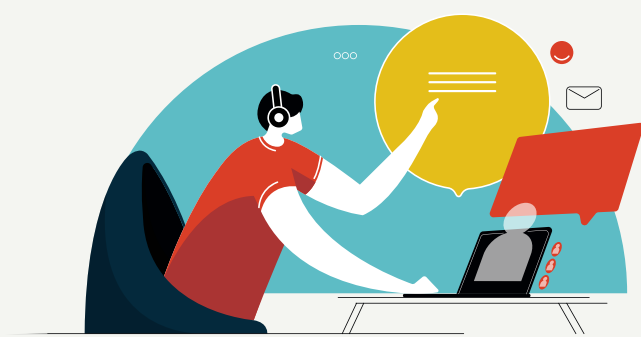
By leveraging the scale and collaboration of a consortium, your institution accesses high-performance infrastructure that no single institution could build on their own.

---

Internet2 is your platform, your community,  
your organization.

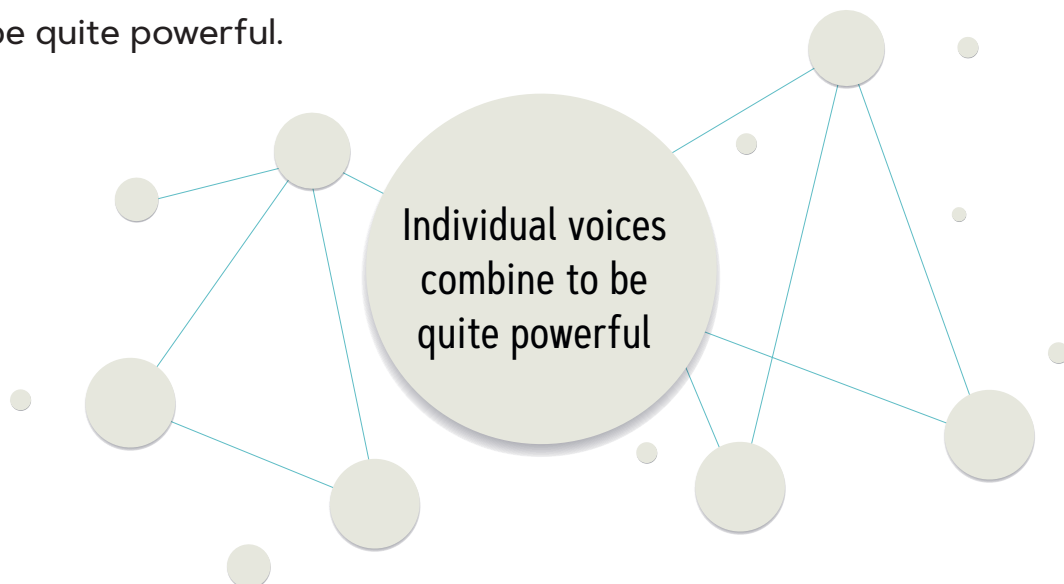
# Challenges in Today's Environment

Colleges and universities nationwide are facing ongoing challenges and are being asked to do more with less. Having highly-digital interaction suddenly thrust upon much of the world has created even more challenges for many—amidst already-increasing demand for high-performance, reliable and secure mobile connectivity.

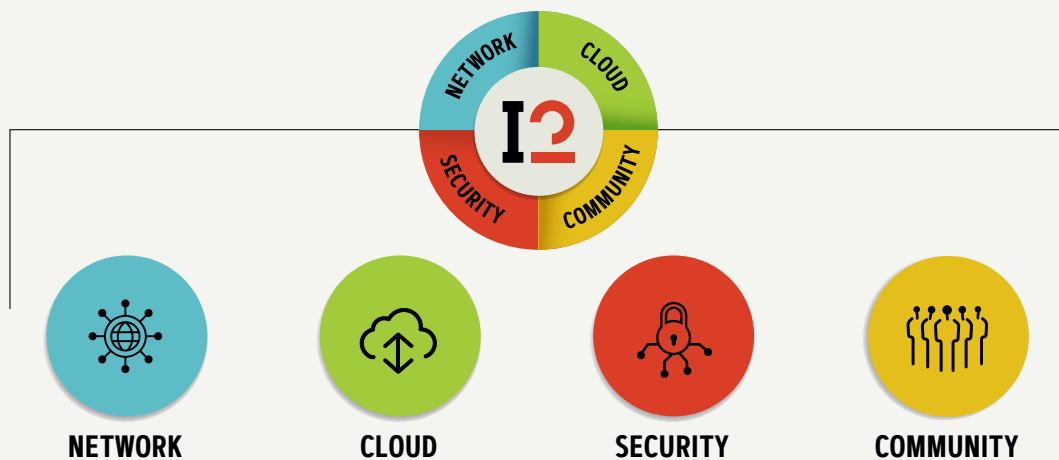


Small institutions can and must remain agile and operate efficiently and securely by leveraging state-of-the-art technologies for remote teaching and learning.

Resources are scarce and operational environments are evolving daily. Going it alone, small institutions don't have a significant influence in shaping the future of network, cloud and compute environments—and they have less opportunity to leverage advanced technologies cost-effectively. However, by leveraging the scale and collaboration of a consortium, individual voices combine to be quite powerful.



**AS AN INTERNET2 MEMBER** or user of Internet2 services, you are a vital part of a national organization that is dedicated to serving the collective needs of the R&E community. Your faculty, researchers, students and staff use infrastructure, applications and services designed expressly to support their work and education. Your institution benefits from a technological environment that is reliable, scalable and secure while maximizing institutional strategic control.



## All Day, Every Day

What does that mean?

### → SCHOLARS & STUDENTS

Have unconstrained, reliable and secure education and collaboration capabilities.

### → RESEARCHERS, EDUCATORS & STUDENTS

Regardless of physical location, access the most powerful computational, cloud and Big Data environments with colleagues around the world.

### → LEADERS OF INSTITUTIONS

Have a trusted cyberinfrastructure for the unique needs of R&E; while also benefiting from an ecosystem founded on collaboration and best practices with colleagues and experts.

### → NETWORK ADMINISTRATORS

Have direct access to an experienced community of problem solvers and vetted solutions.

# All Day, Every Day

How does that happen?

## ADVANCED CYBER-INFRASTRUCTURE

Engineered for zero congestion. No matter how the world changes, you have the most network flexibility and agility available with embedded security solutions.

## TRUST NETWORK

Provide trusted single sign-on capabilities for all of your users to securely and seamlessly collaborate with millions of people and thousands of applications via InCommon.

## EDUROAM WIFI

You receive high-speed, roaming global Wi-Fi service in more than 70 countries enabling your researchers, students and staff to obtain secure and fast internet connectivity across campuses and millions of access points across the globe.

## COMMUNITY

Increase impact and knowledge from the power of community, and support the work of your researchers, students and faculty with the most advanced technologies, services and partnerships available.

## PARTNER

With passionately collaborative peers from universities, industry and federal organizations like NSF, NIH, NASA, NOAA, Smithsonian, and more.

## REGION

Leverage Regional Networks to serve as a communication conduit regarding campus and regional infrastructure and requirements while sharing information about national computation resources with their campus communities.

## ECOSYSTEM

Participate in a community dedicated to supporting the technology needs and missions of R&E institutions now and into the future.

## CONNECT

Connect to and use the largest and fastest network in the U.S. dedicated exclusively to R&E—connecting universities, colleges, national labs, data assets and computational resources in 100+ countries across 65+ global partner networks.

## CLOUD SERVICES & CAPABILITIES

Get easier and more secure access to Microsoft, AWS and Google Cloud through existing connections—up to 5G at no additional cost.

Speed deployment of cloud services—that are customized and validated by colleagues through NET+.

## COLLABORATE

Participate in face-to-face and virtual convening opportunities to learn, share and network with like-minded individuals facing the same challenges as you.

## ADVOCACY

Benefit from advocacy for the expansion of broadband capabilities for our nation's community anchor institutions (K-12 schools, public libraries, colleges and universities, health care, museums and other cultural and historic organizations).

## CONSORTIUM

Leverage the power of consortium through Regional Networking partners that have direct access to the Internet2 national high-speed R&E network backbone.